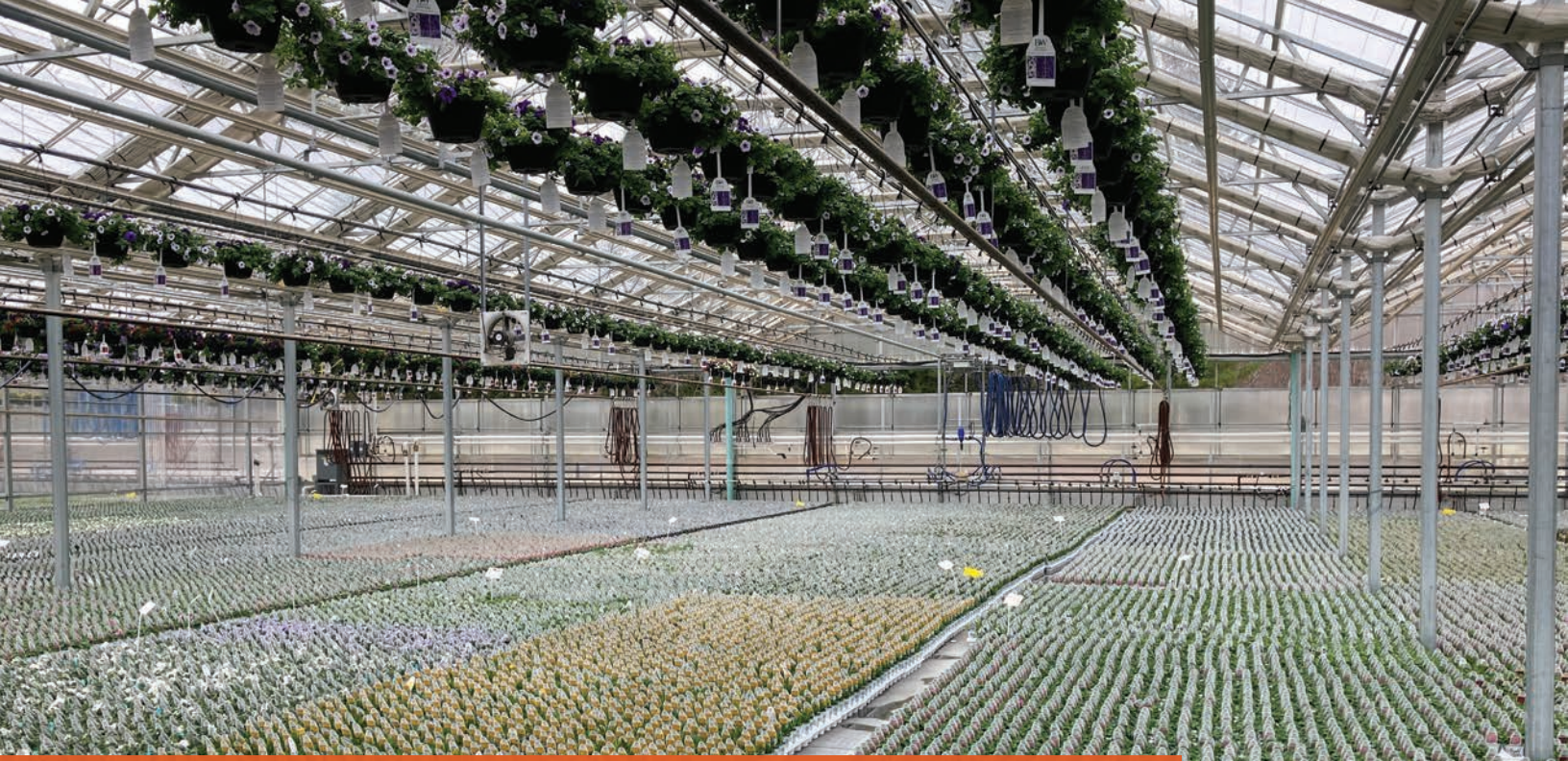


TRADITIONAL A-FRAME STYLE

# VAIL

The All-Purpose Workhorse





Pleasant View Gardens, NH

# THE VAIL

The Vail is the undisputed workhorse of the Prospiant family, combining high-performance strength and unmatched versatility in one multi-purpose package. This tough greenhouse has a variety of uses for crop production, retail, shipping, headhouses, and more. It is also durable enough to handle high wind, heavy snow loads, and even seismic activity, giving you the peace of mind that your crops have the best protection possible.



Hicks Nursery, NY



Oakland Nurseries, OH

## Get to Know the Vail

- ✓ One-piece, factory-welded trusses for strength and easy assembly
- ✓ High-strength Tenzaloy Column caps and gutter saddles
- ✓ Standard 6/12 roof pitch helps shed snow and reduces condensation inside the building
- ✓ Optional Atrium Roof vent opens vertically to 85° to maximize passive ventilation. Patented Nex-Hood for partial roof opening.
- ✓ Large walkable gutter for ease of installation of the chosen glazing
- ✓ Unique in-house roof extrusion design with gasketing keeps leaks out and channels condensation out of the building.
- ✓ High-strength, double-toothed steel rack arms offer stronger wind resistance than single-toothed aluminum used in other vents on the market.
- ✓ Option to cover with metal decking and insulation
- ✓ Optional high-clearance trusses
- ✓ Optional powder-coated frame, flashings, and extrusions available

## Versatility at Its Best

- **Maximize crop space**  
Taller gutter heights provide plenty of clearance for any type of crop or overhead equipment. Opt for high-clearance trusses to gain more overhead space or to accommodate overhead/oversized doors.
- **Create climate zones**  
Optional partition walls available to easily section off zones with interior walls.
- **Convert to a headhouse**  
Seamlessly add metal decking and insulated metal coverings.
- **Enhance airflow**  
Optional atrium roof vent, single or double roof venting
- **Versatile covering options**  
Flexibility of using polycarbonate, glass, acrylic, metal
- **Adapt to your needs**  
Accommodates various ventilation styles, growing systems, shade systems, and heating and cooling systems.

## Strength at Its Finest

- **Built for resilience**  
Meets regional wind and snow and seismic load requirements for building permits.
- **Fortified for weight**  
Supports overhead equipment, hanging baskets, heat pipe, fire suppression, and irrigation needs.
- **Crafted to endure**  
Triple-galvanized U.S. square steel for strength and longevity. Aluminum extrusions and flashing for a long-lasting clean finish.



# PROSPIANT

EXPERTISE YOU CAN TRUST. CAPABILITIES YOU CAN COUNT ON.

## Proven Track Record of Success

- 10,000+ customers
- 3,000+ completed projects

## Qualified In-House Talent

- In-house engineering\* for all disciplines
- We work with P.E. Registered partners as required
- Extensive nationwide qualified installer network
- Qualified and experienced Project Managers OSHA 10/30 certified

*\*We work with partners to ensure proper, compliant performance of engineering and design services.*

## North American Manufacturing

- U.S. and Canada
- NGMA Member

## Contact us to purchase

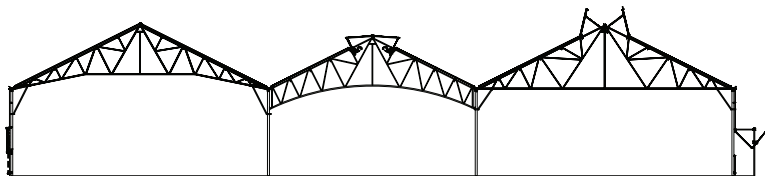
(513) 242-0310

sales@prospiant.com

www.prospiant.com



©2024 Prospiant. All rights reserved.



CAD Drawing shows exterior drop down guillotine - EDDG vent (left), double roof vent (center), atrium vent (right) and swing out vent (right).

High-clearance truss (left), curved bottom cord truss (center), and standard flat bottom cord truss (right).

## VAIL SPECIFICATIONS

- Standard gutter heights: 10'-16'
- Standard widths: 15', 24', 30', 35'6", 41'6", 42' spans
- Standard Bay Spacing: 10' or 12', depending on building code requirements
- Roof load ratings: 20 #/sq ft or higher
- Non-standard widths and heights available